



‘AUSTRALIA DAY LIVE - HARBOUR’ ACCESSIBLE VIEWING AREA SYDNEY OPERA HOUSE, QUAY VIEW (WESTERN BROADWALK)

This information fact sheet is for guests who have registered for the accessible viewing area for ‘Australia Day Live’ on the Harbour at the Sydney Opera House, Quay View (Western Broadwalk) - Zone C.

The intention of these accessible viewing area is to prioritise the accessible requirements of our guests who use a mobility device like a wheelchair or power-chair but also acknowledge that a number of guests may also have other mobility, sensory, cognitive or medical requirements beyond wheelchair access that may also require seating in the accessible viewing area. We do our best to accommodate any guest who identifies with any of these accessibility/medical considerations at our event.

Event Overview

Australia Day is a day to reflect, respect and celebrate the Australian spirit and the best of this country – our mateship, our sense of community and our resilience.

You and your guests will have access to view the concert on the big screen and see the fireworks and the maritime display on Sydney Cove. The pre-show entertainment starts at 6:30pm, ahead of the main show kicking off at 7.30pm to 9.30pm. We ask that you don’t arrive at your accessible viewing area any early than **5:30pm.**

Getting There

Plan your trip and consider all the available travel options ahead of time. Public transport is the easiest way to get around on Australia Day with major transport hubs within short walking distance to your viewing area.

On arrival (5:30pm) to the Sydney Opera House Western Broadwalk accessible viewing area, you will be greeted by our friendly staff who will mark your name off and issue you with a wristband for your area.

Public Transport

Circular Quay is the closest transport hub with a short 9-minute walk to your viewing area with frequent trains, buses, ferries and light rail services. Alternatively, Wynyard, Martin Place and St James transport hubs are also within walking distance. Some transport services will be affected by exclusion zones on the harbour and road closures.

For all the details you need to plan your trip visit:

<https://www.australiaday.com.au/information/public-transport/> or go to

<https://maps.cityofsydney.nsw.gov.au/accessibility-map/> for accessible parking and transport information.

Road closures will be place in the city on Australia Day. For more information, please see www.australiaday.com.au/information/road-closures/.

Wheelchair Accessible Taxis

For information on wheelchair-accessible taxis, see the [Transport for NSW website](#). Zero 200 is a centralised booking service for wheelchair-accessible taxis in Sydney <https://www.13cabs.com.au/zero200/> or you can call **02 8332 0200**.

Designated drop-off/pick-up locations

Following is the pick-up and drop-off point closest to your viewing area. This area is a no parking zones or Special Event Clearways so persons utilising the areas will be required to move on as soon as they have dropped off their passengers.

Location	Details	Available Timing
Macquarie St	1 Macquarie St – western side (Aria Restaurant)	Before 7:30pm and after 10:30pm

Parking

The Wilson Parking at the Sydney Opera House is the closest and most convenient carpark to this location. This is available before 7:30pm and after 10:30pm. For more information, please see <https://www.sydneyoperahouse.com/visit/getting-here/parking>.

Entry height is 2.2 metres. There are 11 accessible parking spaces on Level 1, and 12 accessible spaces on Level 6 of the car park for RTA Mobility Parking Permit holders. Car spaces on Level 6 also have direct wheelchair access to lifts.

Event Facilities

- This is an outdoor event. You are encouraged to come prepared for the forecast weather as the accessible viewing area does not have shade or shelter.
- Please be advised that seating will be provided at this location.
- Drink plenty of water, wear sunscreen and appropriate clothing for summer weather conditions

Accessible toilets

Accessible toilets will be available at all major hub areas on Australia Day and in close proximity to the Sydney Opera House. There are also existing accessible amenities at Circular Quay Station.

Changing Places Amenity



A changing places amenity is available inside the Sydney Opera House, in the main Box Office foyer.



Quiet Space

A quiet room will be available from 5:30pm to 10:00pm for anyone needing a short time away from the stress and stimulation of the event. Please ask our friendly staff for directions to the Tide Room inside the Sydney Opera House.



Wheelchair Charging Station

For our guests that require access to power for the purpose of recharging their powerchair or scooter battery, there will be a recharge area under the Sydney Opera House Monumental Steps. Please ask our friendly staff for directions.



Assistant Animal Area

For our guests that require an area to toilet their assistant animals, there will be a spending area and water stations under the Sydney Opera House Monumental Steps. If you require this area, our friendly volunteers can escort you.

Terms and Conditions on Entry

Security Check Points

Entry to Circular Quay and surrounding areas will be through security check points. A priority entry lane for accessibility guests will be provided at each security check point. Patrons, their bags and other items may be searched or screened for safety and security purposes.

Prohibited items:

- Alcohol
- Flammable devices (flares, fireworks and smoke bombs)
- Glass
- Drones or unmanned aerial vehicles (UAVs)
- Umbrella
- Illegal substances
- Laser pointers
- Sharp items including knives

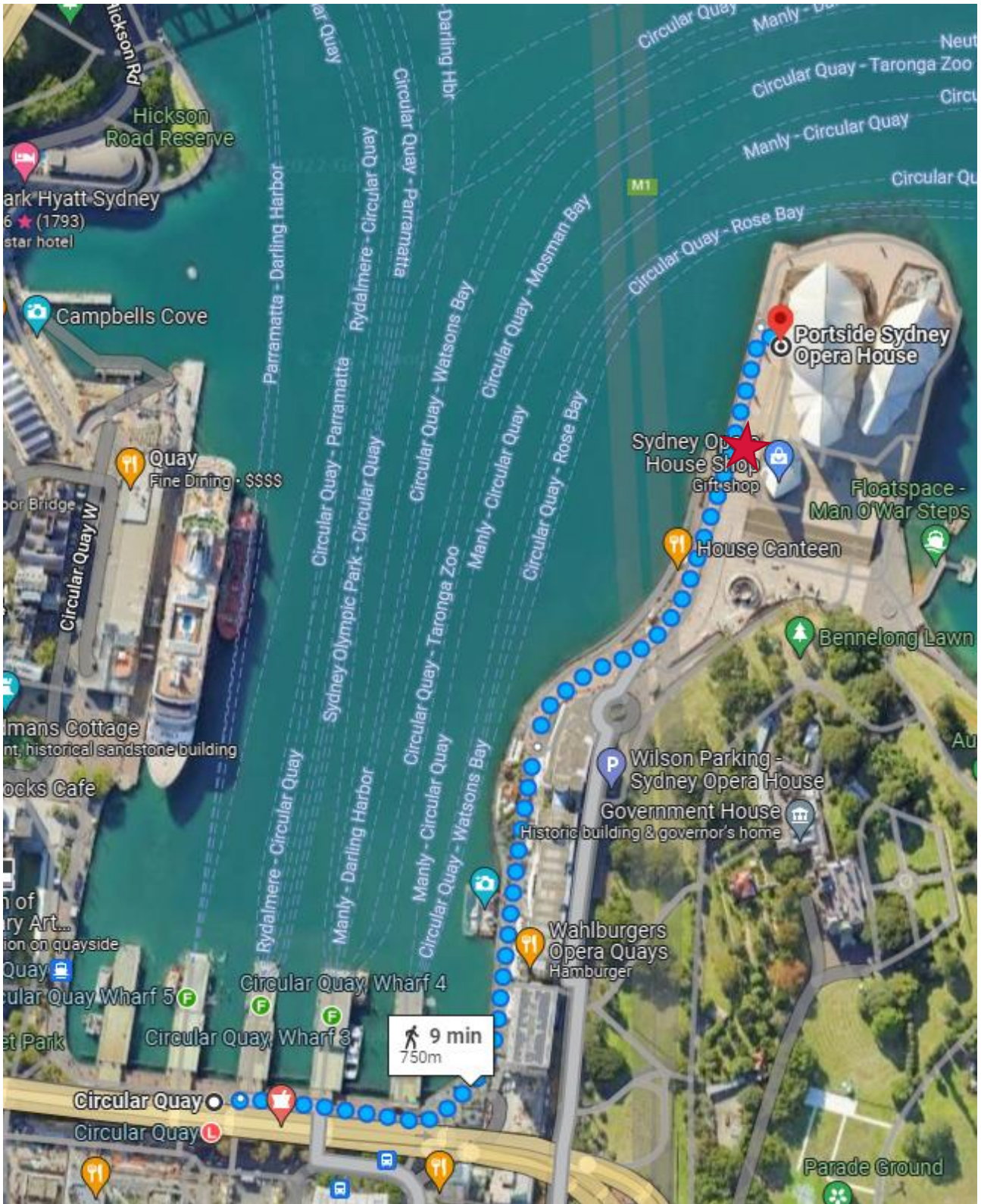
COVID-Safe Events

Our priority is to keep the community COVID safe, so we're staying on top of public health orders and following their advice — and we'll also work to keep you updated with event changes too. Please check <https://www.nsw.gov.au/covid-19> for health and wellbeing advice.

Event Contact

If you have any further questions, please don't hesitate to contact Karen Wade, Event Accessibility and Inclusion Officer, NSW Premier's Department, on 9228 4613 or accessibility@dpc.nsw.gov.au. For general enquiries about the event please visit: www.australiaday.com.au/.

Walking Map – (Circular Quay to Sydney Opera House, Western Broadwalk)





Map is a guide only and not to scale.
Event program subject to change.



- First aid
- Audio description
- Accessible toilets
- Accessible viewing area
- Entry points
- Accessible path of travel
- Charging station
- Quiet space
- Auslan
- Assistant animal area
- Changing places
- Accessible drop-off/pick-up point

Morning Program

1. Dawn Projection on Sydney Opera House
5:20 am – 5:40 am
2. WugulOra Morning Ceremony 7:30 am – 8:30 am
3. Oz Day 10K Wheelchair Race 8:30 am – 10:00 am
George Street

Harbourfest

4. The Great Aussie BBQ 10:30 am – 3:00 pm
Hickson Road Reserve
5. Wheelchair Basketball at the OPT
10:30 am – 4:00 pm
6. Mega Kidz Zone at the OPT 10:30 am – 4:00 pm
7. Silent Disco at the OPT 10:30 am – 4:00 pm
8. Midday Salute: 21 Gun Salute and Roulettes Display
11:55 am
9. Ferrython 12:10 pm – 12:30 pm
10. Maritime Mayhem 12:15 pm – 12:25 pm Circular Quay

11. Seahawk Helicopter Flag Display 12:30 pm – 1:30 pm
12. Harbour Parade 12:45 pm – 2:00 pm
13. Tall Ships Race 1:00 pm – 1:30 pm
14. 188th Australia Day Regatta 1:30 pm – 6:00 pm
Eastern Sydney Harbour
15. Working Harbour Display 2:00 pm – 4:00 pm
Campbells Cove, Overseas Passenger Terminal Wharf

Australia Day Live

16. Australia Day Live – Fireworks, Maritime Show and Concert on the Big Screen 7:30 pm – 9:30 pm
Circular Quay
17. Australia Day Live Concert 7:30 pm – 9:30 pm Sydney Opera House Forecourt (requires a ticket – limited free tickets available pre-event via website)

